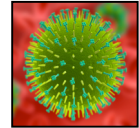
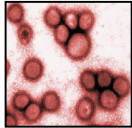




Workforce Staffing During Pandemic Influenza



For hospitals, medical centers, nursing homes, clinics, and public health agencies

“How do I get my employees to report to work during an influenza pandemic?”

“What are the ethical obligations of my doctors and nurses to come to work, despite the risk associated with pandemic influenza?”

“Are there any known factors that discourage health care workers from reporting to work during a pandemic?”

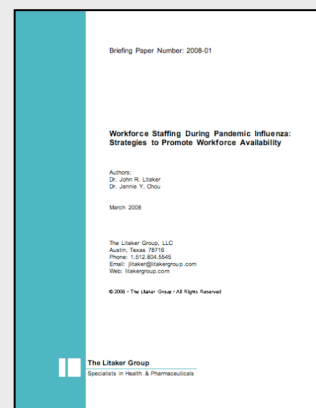
“How many of my employees are likely to report to work?”


“Do I need to provide additional training and education to my nursing home staff on pandemic-specific issues?”

“What strategies should my hospital use to promote duty to care?”

“Does my hospital have an obligation to provide prophylactic medications to employee family members?”

This briefing paper provides a comprehensive overview of issues related to workforce availability and duty to care. It not only answers the questions to the left, but it also provides specific strategies and recommendations that health-related employers can use to promote duty to care and reporting to work for all employees during a pandemic influenza event.



Available for purchase in PDF at:
 litakergroup.com

Authors: John R. Litaker, PhD and Jennie Y. Chou, PhD